

# Cognitive Advisor

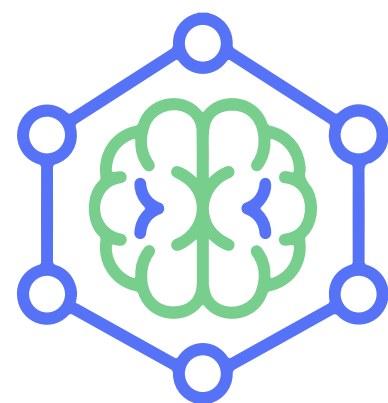
## Detergent Production Business Case

### Key Enablers

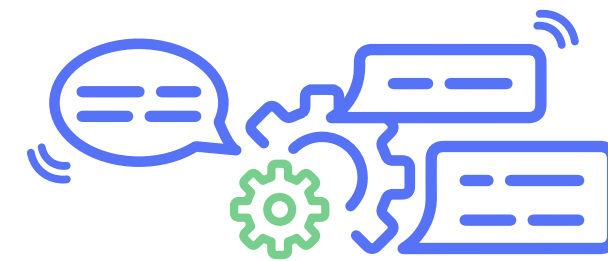
#### Multimodal Interaction



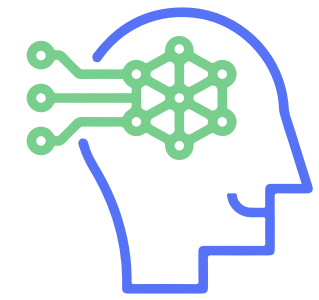
#### Continuously Learning



#### Explainable AI



#### Context Awareness



### User Interactions

#### Acquire Knowledge



Can you describe how  
you solved error code 123?

I reset the counter on machine 2 and  
reduced the torque on parameter B by 12



#### Advise Operators

Hey COALA, I need help  
with error code 123



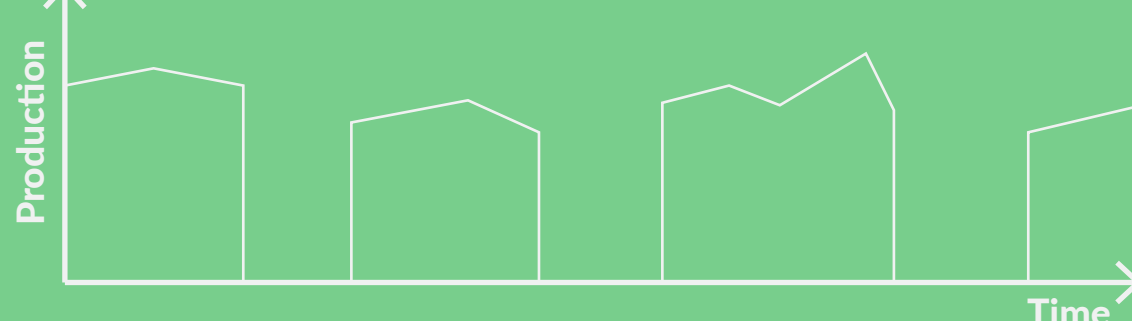
Based on 3 previously recorded solutions,  
I recommend resetting the counter  
on machine 2 and reducing the torque  
on parameter B by 8-12

#### Generate Production Statistics



Generate statistics for the past 4 hours

The OEE is 78%  
2334 units have been produced  
There has 1.5 hour of downtime over 3 stops



#### Deliver Standard Work Instructions



Hey COALA, how do I reconfigure the  
production line for product A1?

You need to perform a rinse-out, and adjust the filling  
parameters. You can find detailed rinse out [instructions](#)  
[here](#) and I can provide you with recent filling parameters.

